



HAWKERSYARD

Northend, Batheaston, BA1 7HN

HAWKERSYARD



Location

The delightful village of Northend, an extension of Batheaston, is conveniently situated approximately three miles to the East of the City of Bath, a UNESCO World Heritage site. It has an excellent primary school and offers a selection of day to day amenities to include shops, a Post Office, doctors' surgery and dentist.

The site and surroundings

The site lies at the foot of Solsbury Hill and on the edge of the village with views over the beautiful St Catherine's Valley. It is within the Green Belt and Cotswold Area of Outstanding Natural Beauty, providing long term protection for the nearby countryside from further development.

A green "buffer" strip runs along the north east boundaries of the gardens and leading down to the brook, with a requirement for it to be managed in perpetuity as a landscape and ecology protection area, which can never be built on or be taken over as private garden.

Situated on the slope of Solsbury Hill, the summit with its renowned views is not much more than half a mile on foot, the site rightly feels on the edge of the village and there are pretty country lanes and footpaths to the east, north and west.

Historical Information

The adjacent grade II* listed Eagle House with its rather magnificent sculpture on the parapet overlooking the site was designed by the pre-eminent Bath Georgian architect John Wood the Elder as his own house.

By 1900 it was in the ownership of Colonel Linley Blathwayt, whose wife Emily, a friend of Emmeline Pankhurst, was closely connected with the suffragette movement. Women were invited to stay as a form of refuge after being released from prison following hunger strikes and the house became known as "Suffragettes Retreat".

Colonel Blathwayt created an arboretum in the field next to Eagle House and encouraged each suffragette to plant a tree to commemorate their prison sentences and hunger strikes. Sadly this was destroyed in the 1960's and all that remains is a lone magnificent Austrian Pine.

In cognisance of the historic link between this locality and the suffragette movement Charlcombe Homes has named each of the houses after a suffragette who stayed at the Eagle House and planted a tree in the arboretum.

The joinery works were started by the Hawker family soon after the First World War and was run by three generations of the family. The story is that it was one of the many small factories where production of fighter aircraft parts was dispersed during WW2 to reduce the risk of bombing. It then became a joinery works producing high quality timber products and the business continues via a modern factory facility in Frome, celebrating its centenary in 2019.



1

Wentworth

2

Holme House

3

Kenney House

4

Despard House

8

Howey Cottage

5

Pankhurst House

7

Garnett Cottage

6

Fawcett House

Design Concept

The presence of nearby listed buildings and the picturesque character of Northend prompted a “polite” traditional approach in design terms, and the conceptual basis stems from the vernacular form of such “edge of village” locations. These are often characterised by narrow back lanes and courtyards, an informal, fragmented layout with buildings of contrasting heights, shapes and materials, some glimpses though to open countryside, but at the same time a degree of visual enclosure from the buildings and connecting stone walls.

The variety in such areas would be due to the mixture of higher status village houses of more formal appearance, simple cottages, and utilitarian uses such as blacksmiths workshops, and this “hierarchy” of forms has been used to help create the desired effect here. The existing listed cottage is used as the fulcrum for the curving access lane and courtyard which acts as the backbone around which the houses are grouped, with no two being exactly in line with each other. Most importantly, the plan form of the houses has been carefully designed so that their roofs lie at juxtaposing angles, scales and pitches, vital to the “picturesque” composition.

Of equal importance to the variety of form and massing, is the restrained palette of materials which ties the visual scene together. These are not used randomly, but reflect the hierarchy, for instance coursed rubble and tall sash windows on the Victorian “villa” style numbers 1 and 5, stone surround casement windows on the less formal houses and simpler random rubble without surrounds at the cottage end of the spectrum. Crucially, all materials are high quality in themselves, real natural stone ashlar and rubble, clay tiles or natural slate roofs, all employed with the correct detailing and proportions.

The Houses

The variety of shapes, detailing and materials, and the differing immediate surroundings give each house an individual “personality” from the outside, which extends inside with layouts and changes in level dictated by making best use of the orientation and slopes.

All are two storeys, detached, with a mix of 3, 4, and 5 bedrooms, but the traditional appearance belies the wholly modern interior layout, in particular the generous open plan kitchen/dining area forming the heart of the home, connecting directly with the private garden.

The larger houses include a garage, and all have at least two off road parking spaces in addition. All houses have good size gardens with paved terraces or decks looking out over the garden to the trees and countryside beyond, and numbers 5,6, and 7 have courtyards providing private space at the front.

Accommodation

Ground floor

Panelled or boarded front doors below stone canopy or timber porches lead into entrance halls with cloakrooms and coats cupboards and go through to the kitchen/ dining/garden room at the back of the house, the modern evolution of the “farmhouse kitchen”, this is where most family time is likely to be spent. The glazed doors provide visual and physical connection reflecting the modern desire for al fresco living. The full range of contemporary styled kitchen fittings include island units and double door fridges.

The living room provides a very deliberate contrast with the family kitchen, having a cosy, more enclosed feel focused on the traditional fireplace, but nevertheless at around 20 feet (6.0 metres) in length is also large by normal standards.

The five-bedroom houses also have another good size room, which could equally be a family room, playroom, large home office, or cinema room.

All houses have a separate study and utility room with plenty of storage space, both of which many people consider the most valuable rooms in the house in removing the clutter from the living spaces.

First floor

The stair leads up to a spacious landing, including a linen cupboard, that provides access to the bedrooms, all of which are easily large enough for double beds.

The master suite is substantial in size affording a quiet sitting area away from the family bustle. The four and five bed houses have master bedrooms furnished with large wardrobes with full interior fittings and have ensuites with paired basins, a large shower enclosure, and a steel bath. Four and five bed houses have a second ensuite bedroom, also with a large shower, and the remaining bedrooms share the family bathroom complete with separate shower and steel bath.



Plot 1, Wentworth
Approx. Gross Internal Area
2174 Sq Ft - 202 Sq M
(Excluding Garage)



Plot 1 - Lounge



Please note, the furniture in this image has been virtually staged.

Plot 1 - Kitchen/Diner



Please note, the furniture in this image has been virtually staged.

Plot 1 - Family Room



Please note, the furniture in this image has been virtually staged.

Plot 1 - Master Bedroom



Please note, the furniture in this image has been virtually staged.







Plot 2, Holme House
Approx. Gross Internal Area
1787 Sq Ft - 166 Sq M
(Excluding Garage)



Plot 2 - Lounge



Please note, the furniture in this image has been virtually staged.





Plot 3, Kenney House
Approx. Gross Internal Area
2131 Sq Ft - 198 Sq M
(Excluding Garage)









Plot 4, Despard House
Approx. Gross Internal Area
2045 Sq Ft - 190 Sq M
(Excluding Garage)









Plot 5, Pankhurst House
Approx. Gross Internal Area
2174 Sq Ft - 202 Sq M
(Excluding Garage)





Plot 6, Fawcett House
Approx. Gross Internal Area
1787 Sq Ft - 166 Sq M
(Plus Detached Garage)









Plot 7, Garnett Cottage
Approx. Gross Internal Area
1378 Sq Ft - 128 Sq M



Plot 7 - Kitchen/Diner



Please note, the furniture in this image has been virtually staged.

Plot 7/8 - Lounge



Please note, the furniture in this image has been virtually staged.

Plot 7/8 - Master Bedroom



Please note, the furniture in this image has been virtually staged.

Plot 7 - Patio





Plot 8, Howey Cottage
Approx. Gross Internal Area
1378 Sq Ft - 128 Sq M



Plot 8 - Kitchen/Diner

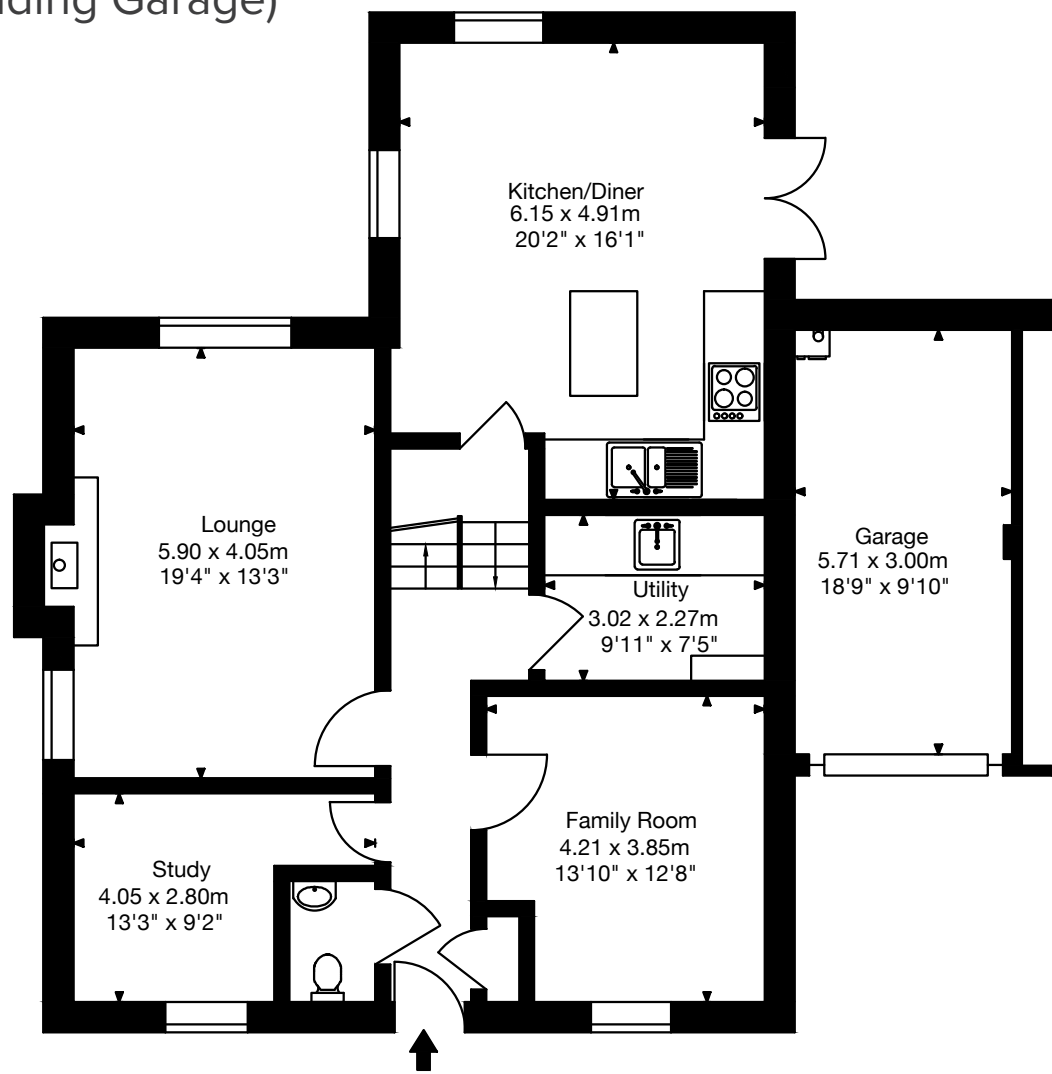


Please note, the furniture in this image has been virtually staged.

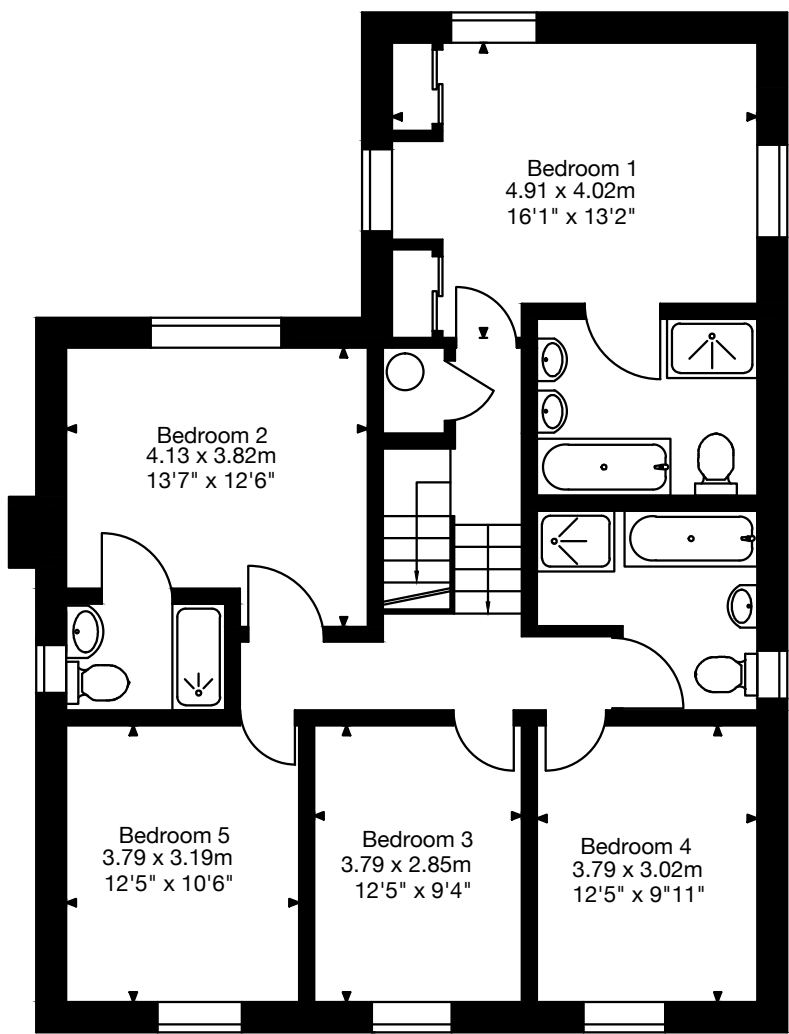
Plot 8 - Patio



Plot 1, Wentworth
Approx. Gross Internal Area
2174 Sq Ft - 202 Sq M
(Excluding Garage)

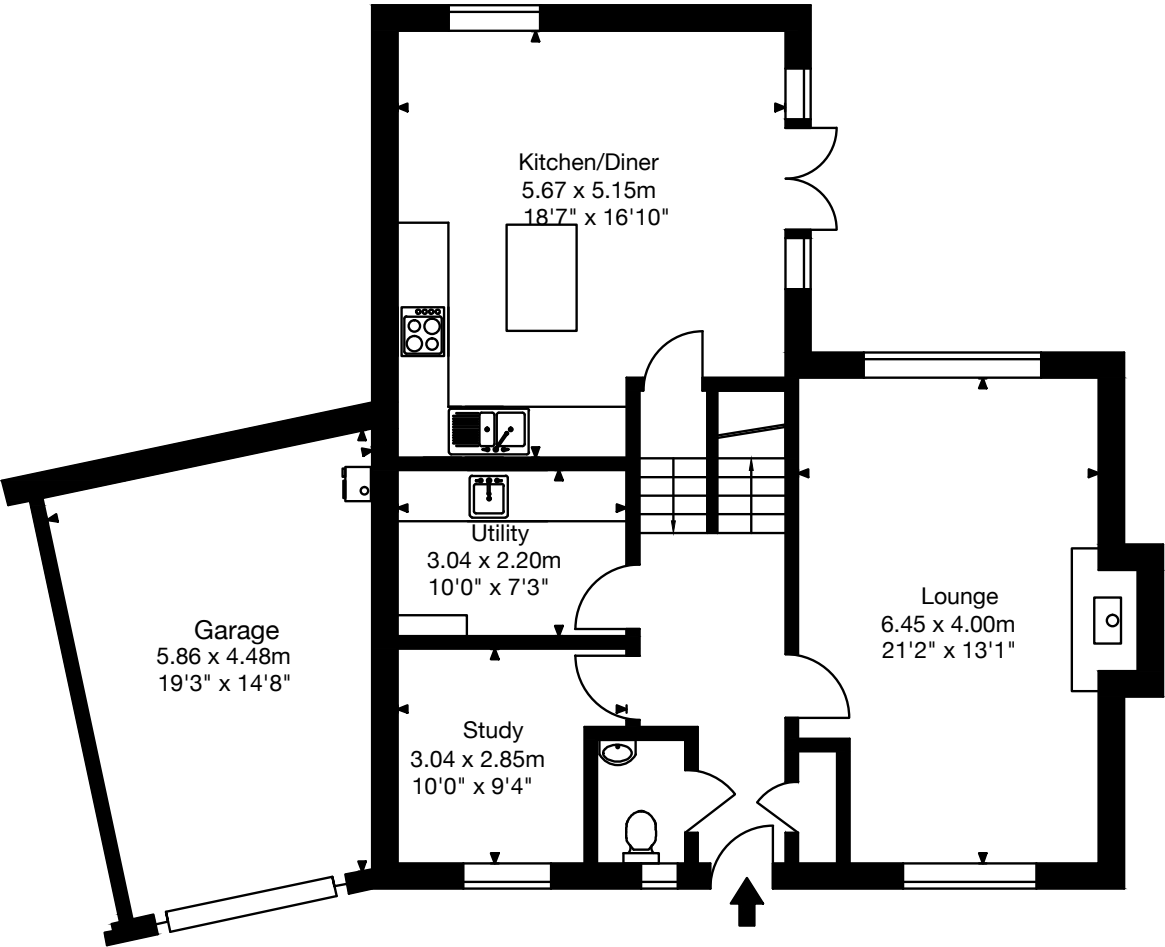


Ground Floor

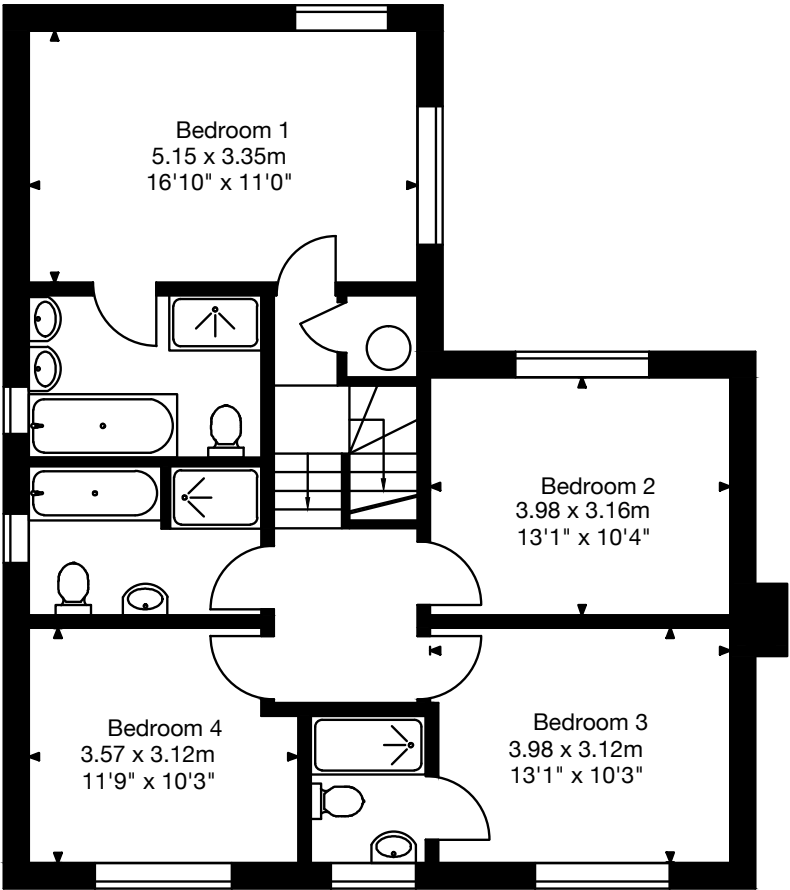


First Floor

Plot 2, Holme House
Approx. Gross Internal Area
1787 Sq Ft - 166 Sq M
(Excluding Garage)

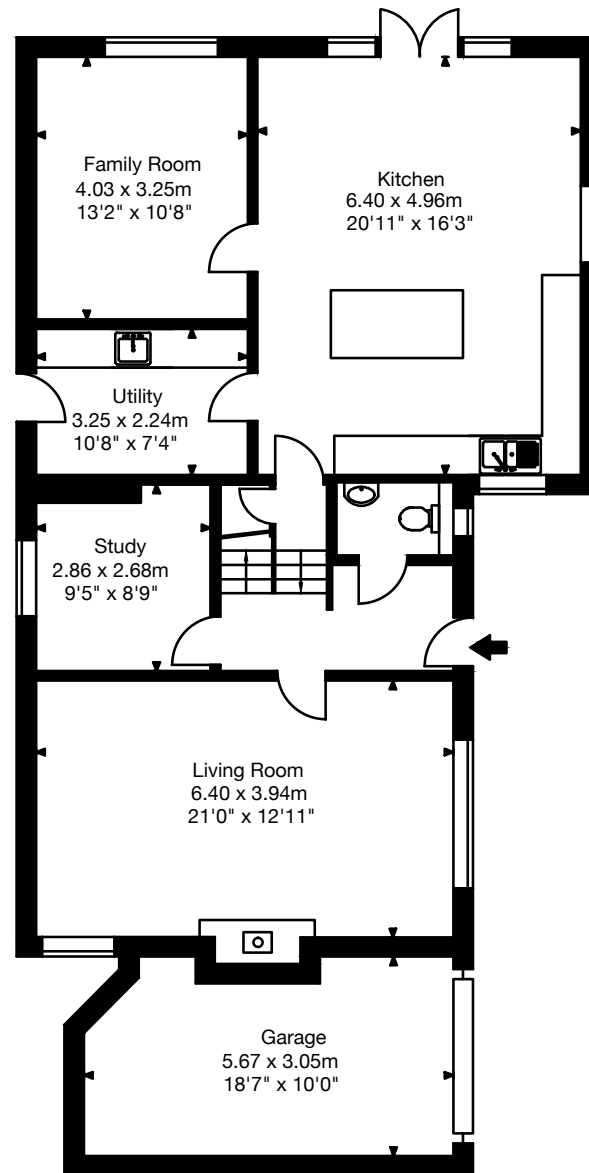


Ground Floor

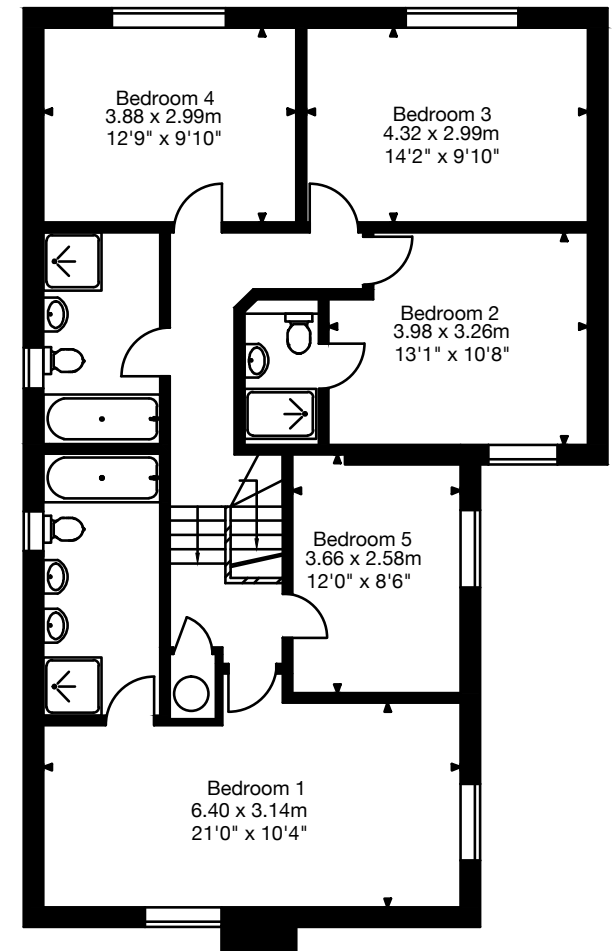


First Floor

Plot 3, Kenney House
Approx. Gross Internal Area
2131 Sq Ft - 198 Sq M
(Excluding Garage)

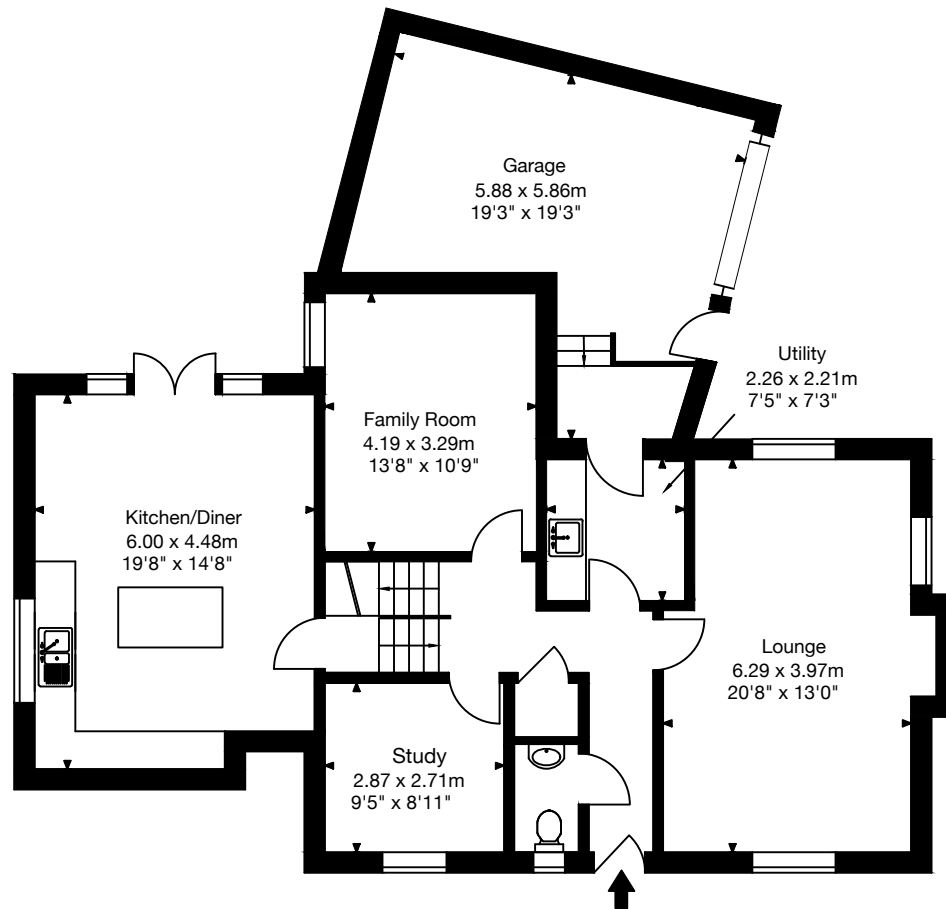


Ground Floor

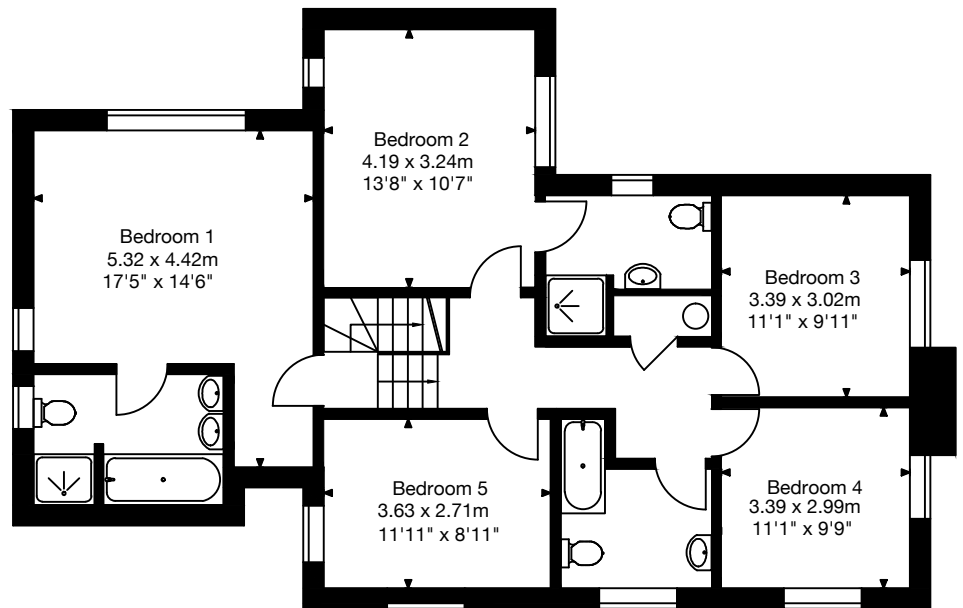


First Floor

Plot 4, Despard House
Approx. Gross Internal Area
2045 Sq Ft - 190 Sq M
(Excluding Garage)

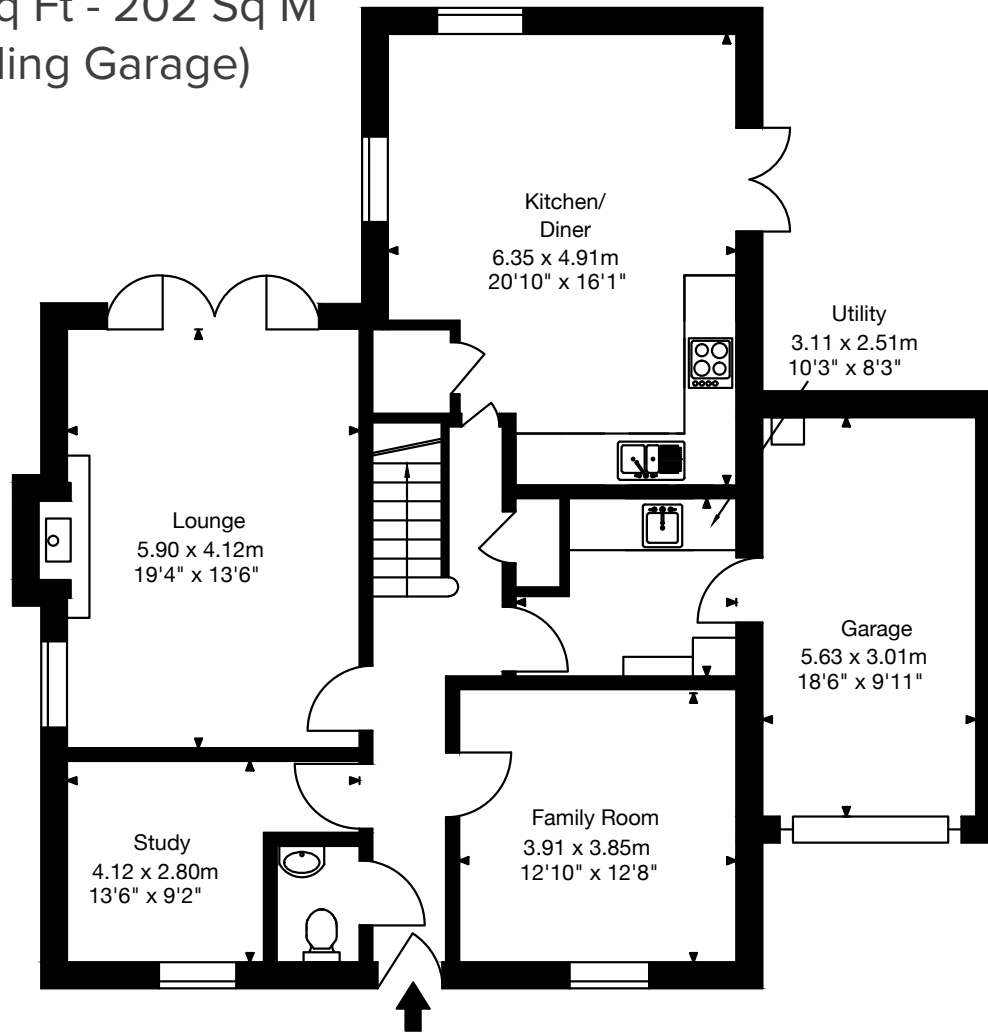


Ground Floor

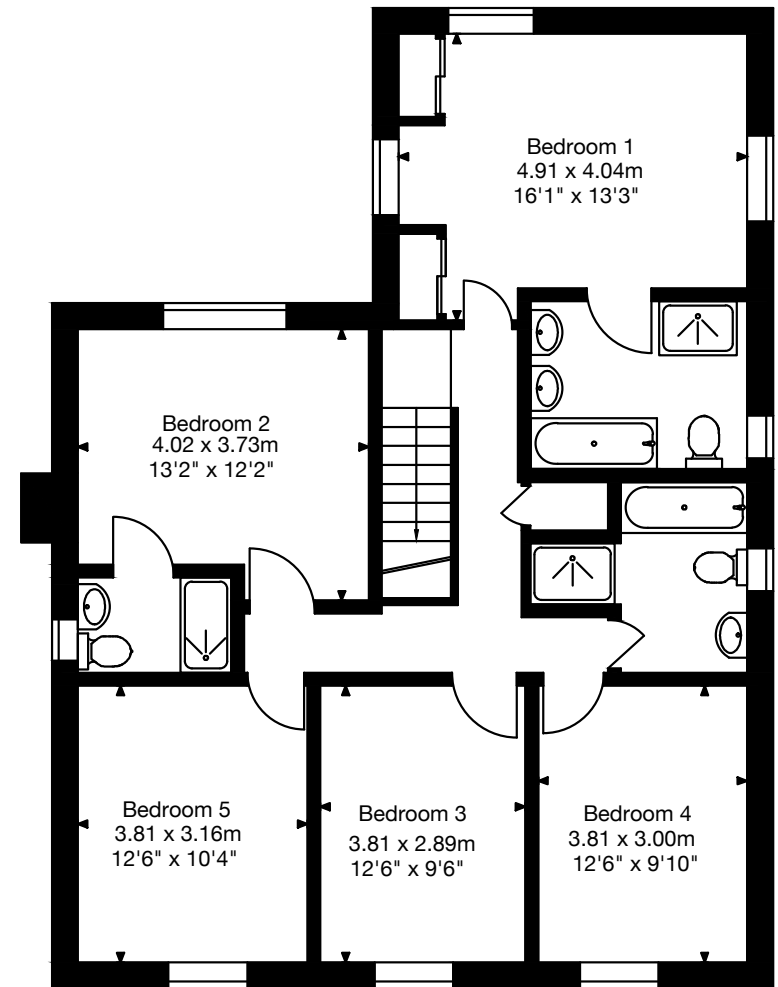


First Floor

Plot 5, Pankhurst House
Approx. Gross Internal Area
2174 Sq Ft - 202 Sq M
(Excluding Garage)

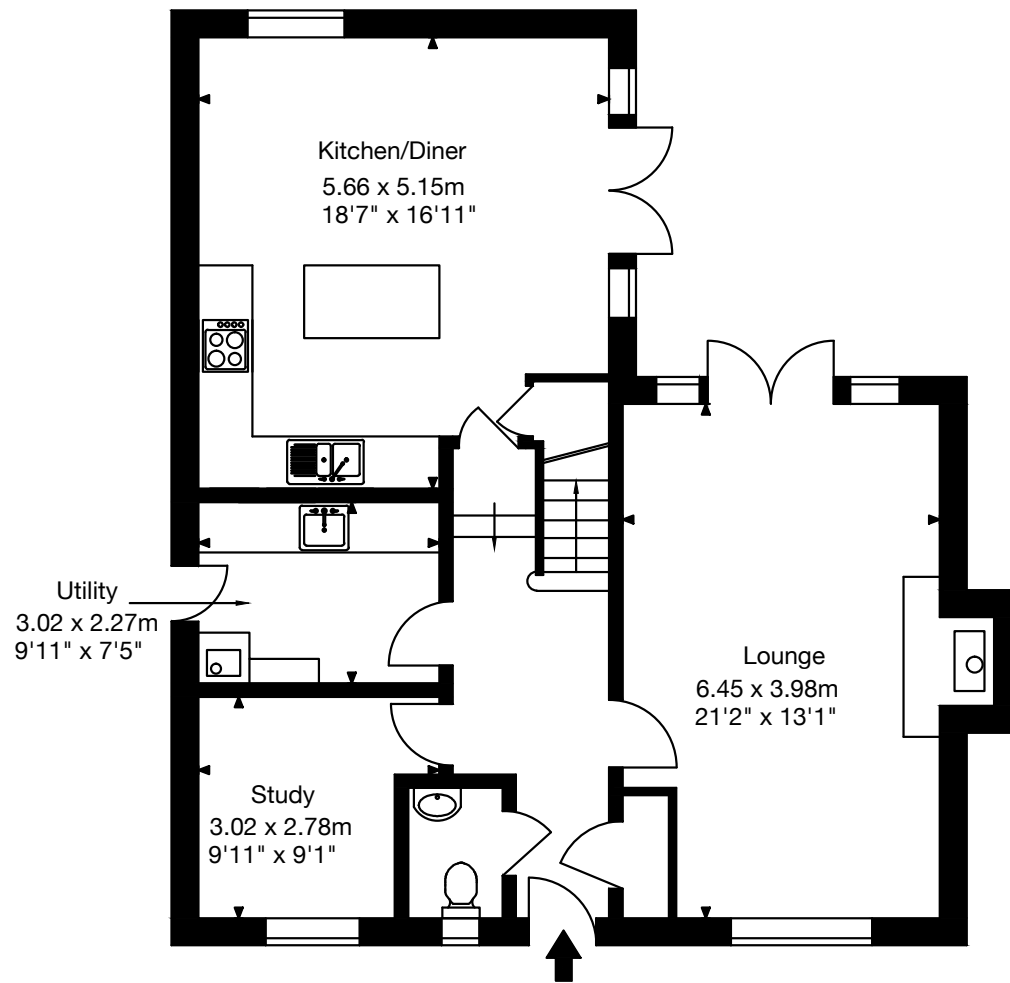


Ground Floor

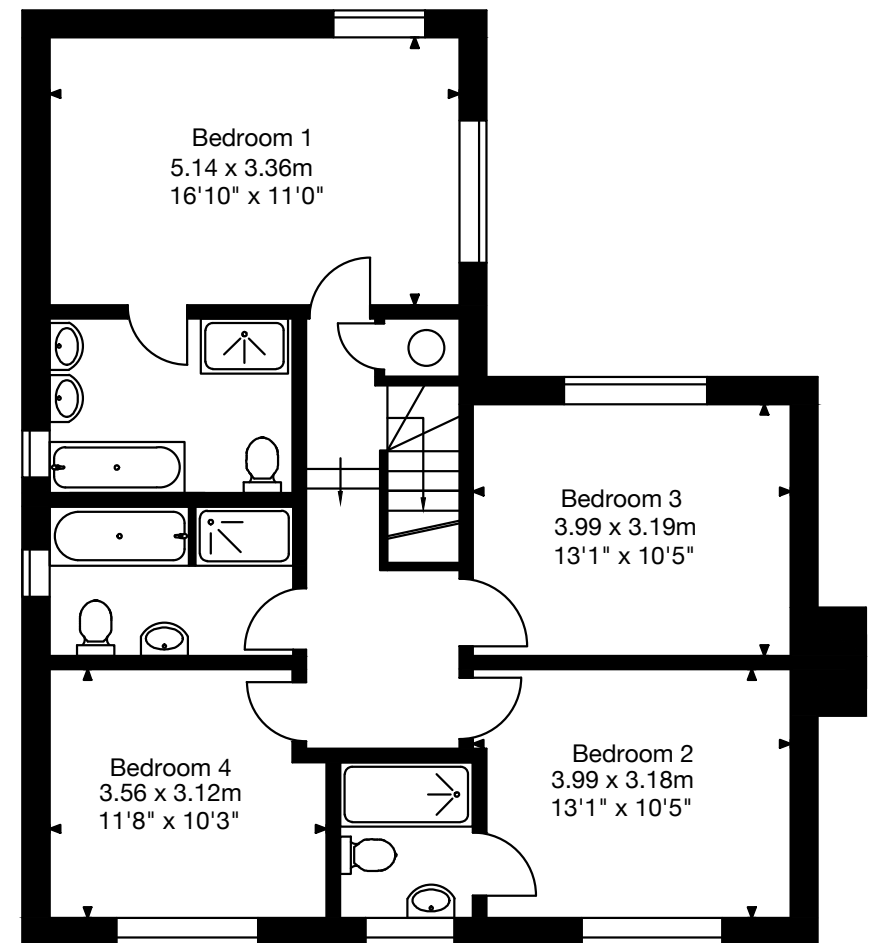


First Floor

Plot 6, Fawcett House
Approx. Gross Internal Area
1787 Sq Ft - 166 Sq M
(Plus Detached Garage)

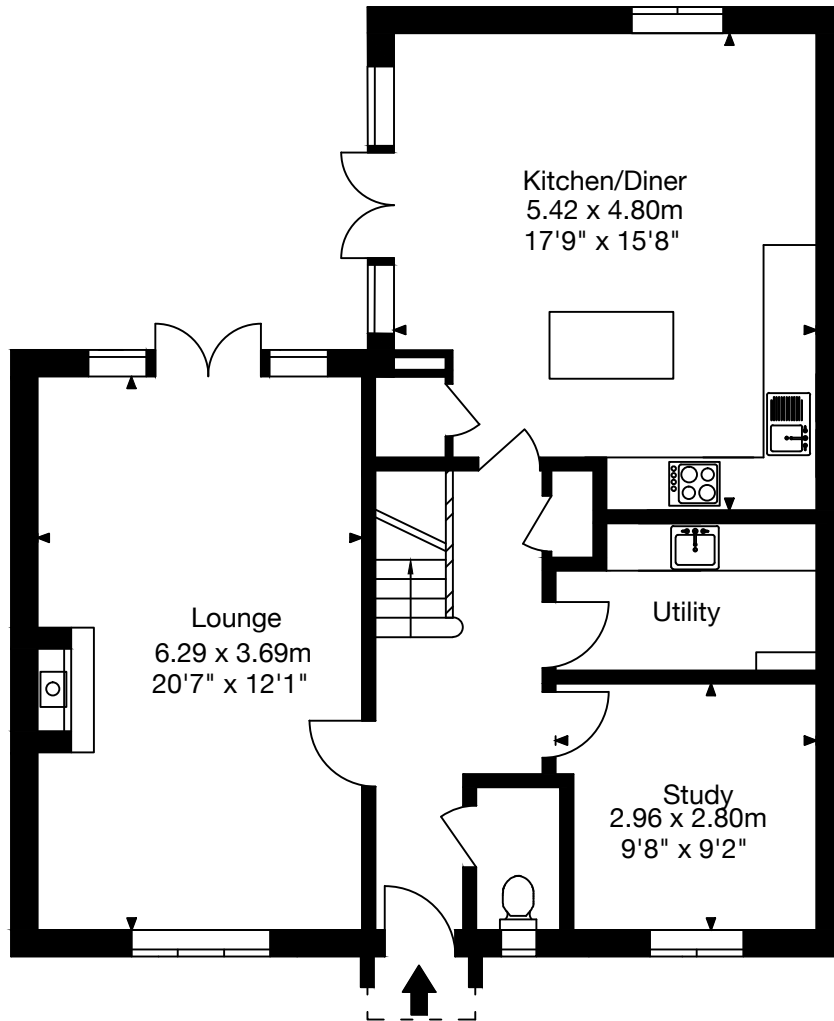


Ground Floor

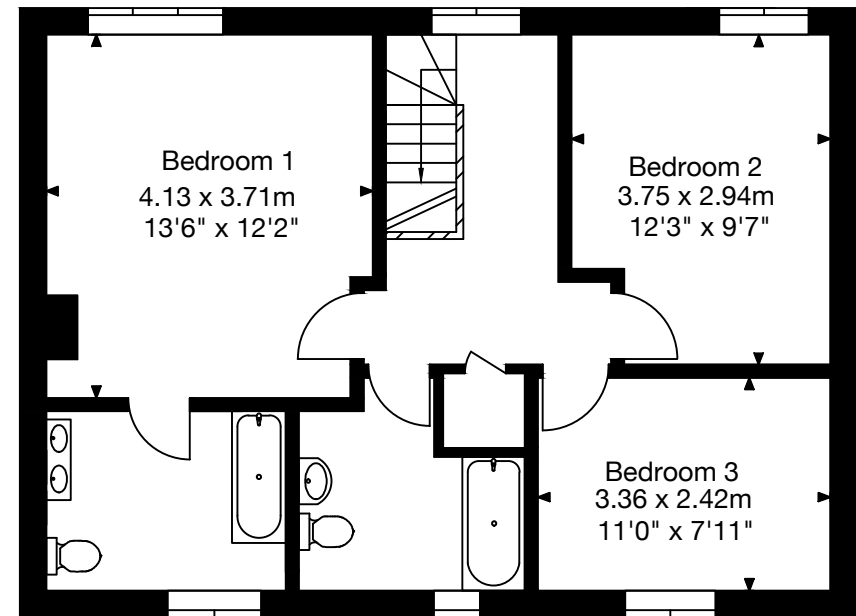


First Floor

Plot 7, Garnett Cottage
Approx. Gross Internal Area
1378 Sq Ft - 128 Sq M

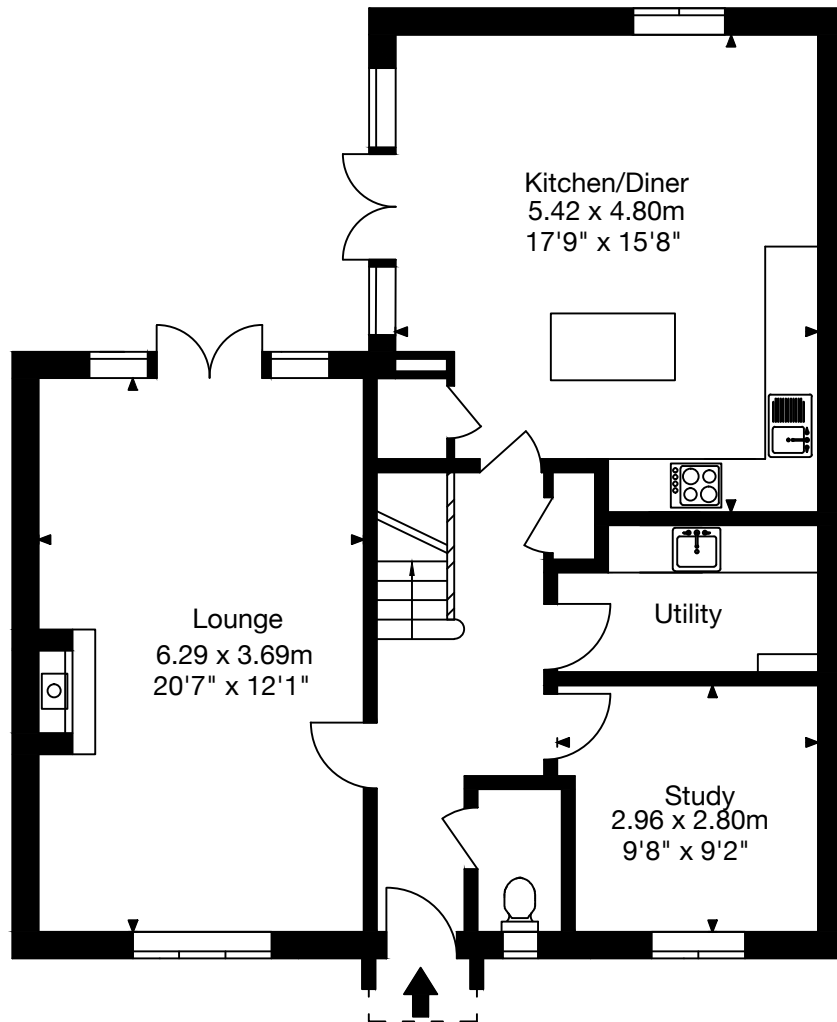


Ground Floor

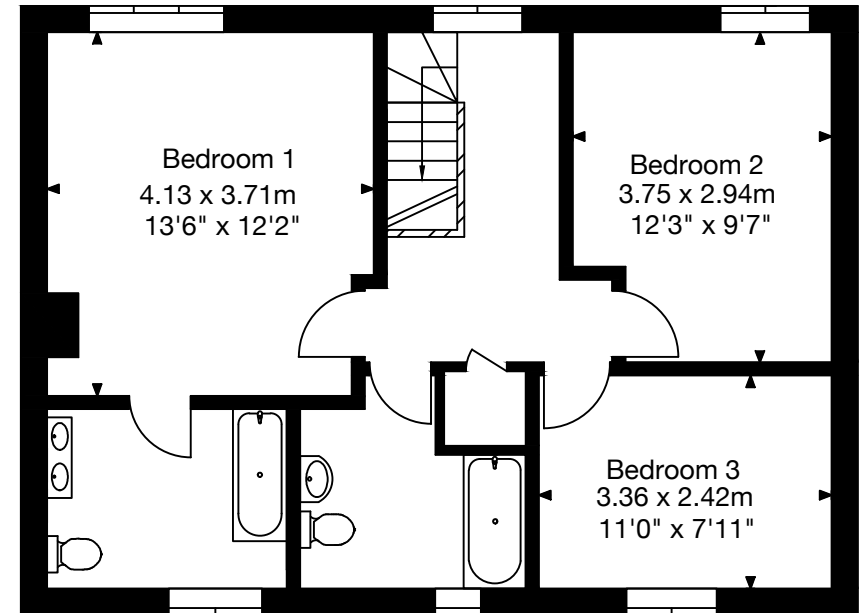


First Floor

Plot 8, Howey Cottage
Approx. Gross Internal Area
1378 Sq Ft - 128 Sq M



Ground Floor



First Floor

Specifications

Kitchen

- High quality kitchens by Valentino
- A range of quality floor and wall cabinets with soft close drawers & doors
- Resin stone counter tops with upstands
- An Island unit
- Full height iQ fridge/freezer
- iQ double oven,
- iQ flush induction hob and hood
- iQ fully integrated dishwasher
- Undermount stainless one and a half bowl sink
- Filter flow three way tap

Utility

- Range of quality fitted units
- Single sink
- Plumbing for washer and tumble dryer
- Water softener
- Centralised electrical cupboard
- Fully tiled floors

Bathrooms and cloakroom

- Chrome thermostatic shower valves with multi-position shower head
- Shower doors from Merlin (or similar)
- Steel baths
- chrome ceramic disc mixer taps
- Laufen (or similar) WC
- High quality tiling to bathrooms
- Mirrors over all basins with heat pads in bathrooms
- Chrome electrically heated towel rails to all bathrooms
- Shaver socket to all bathrooms
- Floors to bathrooms and cloakrooms fully tiled

Bedrooms

- Fitted wardrobe to the Master Bedroom (except for Plots 7 & 8)

Lighting/Electrics/Heating

- LED low energy downlighters
- Low energy pendants
- Telephone points
- 5 amp, 2 way switched lighting circuits to master bedrooms;
- 5 amp lighting circuits to lounge and family room
- Brushed chrome electrical outlets
- Cat 6 cables to all habitable rooms wired to central point with blank plate
- TV points to all habitable rooms with TV aerial
- Satellite dish wired to central point.

- Gas fired central heating
- Water under floor heating system to the ground floor, flat faced radiators with TRV's to the upper floor
- High capacity pressurised hot water tank
- Combination boiler to P7 and P8

Floors

- Floors screeded for purchaser's own choice of finish
- Tiles to cloaks, utility and bathrooms

Decorative finishes

- Ammonite matt emulsion to walls and ceilings
- Painted, treated, Secured By Design certified timber windows and external doors
- Insulated, painted, 'Secured by Design' timber front door and frame
- Oak and softwood staircase
- Oak finished internal doors with polished chrome door furniture
- Real log burning stove set in an inglenook style fireplace to living rooms

Security

- Mains powered smoke detectors with battery back up
- Timber faced up and over garage doors
- Intruder alarm

Exterior

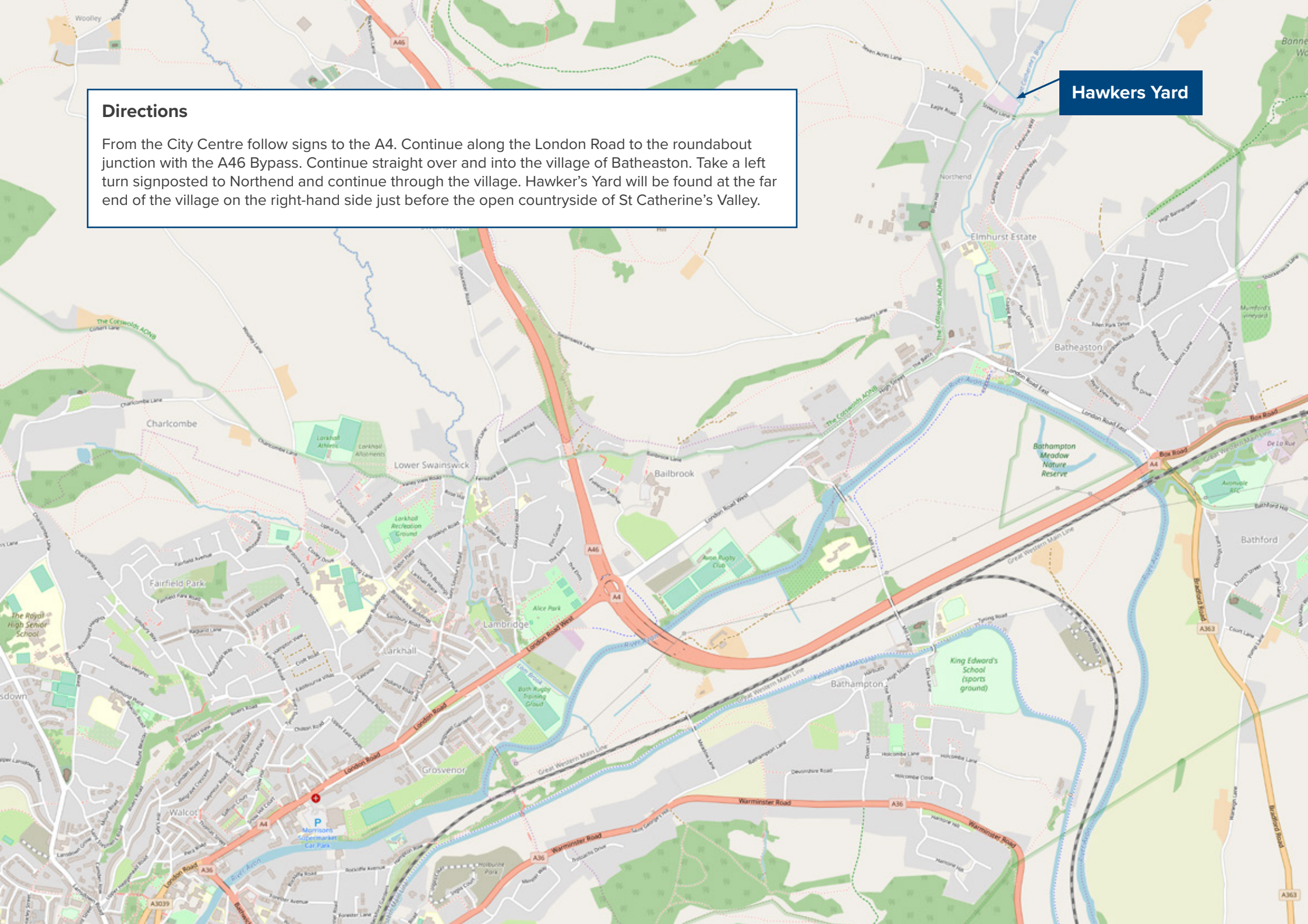
- External lights to entrance area and terrace
- Electric power socket
- PV panels on the roof
- Grassed rear gardens
- Natural flagstones to patios
- Glass guarding to timber decks
- Garden tap
- Fencing and Hedging to gardens
- Rainwater butt
- Landscaping scheme for the whole development including extensive tree planting
- A mixture of materials for the drive and parking area with block pavements, tarmac and gravel in a containment system

NB Charlcombe Homes Ltd reserves the right to replace any manufacturer's item specified with a similar alternative at its sole discretion. Please check with CHL or the Selling Agents, Knight Frank.

Directions

From the City Centre follow signs to the A4. Continue along the London Road to the roundabout junction with the A46 Bypass. Continue straight over and into the village of Batheaston. Take a left turn signposted to Northend and continue through the village. Hawker's Yard will be found at the far end of the village on the right-hand side just before the open countryside of St Catherine's Valley.

Hawkers Yard





Charlcombe Homes - Focus on quality

Charlcombe Homes is a private house building company based in Bath. We are passionate about building houses of the highest quality that both we, and our customers, can be proud of. We build a small number of houses each year and have a track record of obtaining planning consents in sensitive locations through attention to detail and appropriate architectural design. Should you decide to purchase one of our houses at Hawkers Yard you will receive personal attention from both of the company's directors, Alastair Gibson and John Hartley.

Residential Development – New homes - Important notice

1. Particulars; these particulars are not an offer or contract nor part of one. You should not rely on statements by Homes of Bath Fine & Country in the particulars or by word of mouth or in writing as being factually accurate about the property, its condition or its value. Neither Homes of Bath Fine & Country nor any joint agent has any authority to make any representations about the property or development and accordingly any information given is entirely without responsibility on the part of the agents, sellers or lessors. 2. Images photographs and other information: Any computer-generated images, plans, drawings, accommodation schedules, specification details or other information provided about the property ("information") are indicative only. Any such information may change at any time and must not be relied upon as being factually accurate about the property. Any photographs are indicative of the quality and style of the development and location and do not represent the actual fittings and furnishings at this development. 3. Regulations: Any reference to alterations to the property or use of any part of the development is not a statement that any necessary planning, building regulations or other consent has been obtained. These matters must be verified by any intending purchaser.



01225 320 032
36 Gay Street
Bath, BA1 2NT
homesofbath.co.uk



01225 805 445
Ashdown, Richmond Heights
Lansdown, Bath BA1 5QJ
info@charlcombe.com
www.charlcombehomes.co.uk